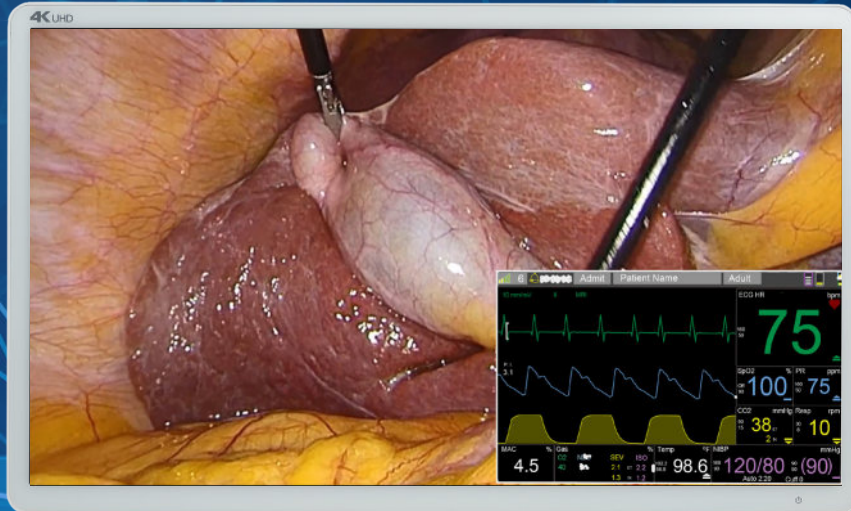


# EMBITRON

ELECTROMEDICAL EQUIPMENT



## MINIMALLY INVASIVE SURGERY EQUIPMENT

## ABOUT **EMBITRON**

In the more than twenty years since its establishment, EMBITRON® Ltd. has become one of the major and suppliers of unique devices for the treatment of the musculoskeletal system, blood circulation disorders, stagnant metabolism and trophic changes in limbs, thereby contributing to significantly improving the quality of life for patients suffering from large varieties of diseases.

Since 2018 EMBITRON company started producing units and complete sets of equipment for minimally invasive surgery. Advanced technical

solutions and design, high reliability, excellent price/quality/performance ratio, high service level enable EMBITRON equipment to be the best choice for surgeons.

EMBITRON distributes its devices worldwide. Our services also include both equipment installation and training of medical staff for operation of the devices.

As of June 2016, EMBITRON Ltd. has been a part of the CertiCon Group.

## ABOUT **CERTICON**

CERTICON, the leading company of the CertiCon Group, with over 350 employees, is an important Czech IT company that has been successfully operating in the

global market since 1996. In 2016, it was named one of the Top 10 European Most Innovative Companies.

CERTICON focuses on comprehensive services in software development and design of electronic circuits for critical applications in ICT, health care, automotive technology, and systems for Industry 4.0.

Over 80% of all services provided by CERTICON are regularly exported to the nations of the EU and to the USA.

# ELECTROSURGICAL GENERATORS



Big TFT display



Comfy menu



High performance



Easy to clean

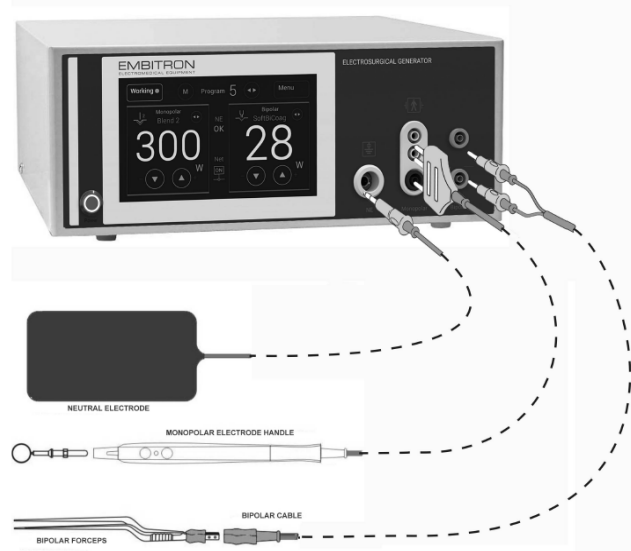


## MBT-1003.2



### ELECTROSURGICAL GENERATOR (300W, TS)

- adaptive system with output power stabilization in wide range of tissue resistances (100-1000 Ohms)
- neutral electrode continuity and LF current leakage monitoring that ensure safety
- self-test of the generator and accessories after switching the power on
- monopolar modes activation: by footswitch or handle
- monopolar cutting in liquid (TUR mode)
- up to 9 frequently used by surgeon modes can be saved in memory
- flat front panel, easy to clean, with touch screen menu for modes and power regulation
- colour 7" TFT monitor displays effective output power levels in all operating modes



Accessories connection

### SPECIFICATIONS

### MBT-1003.2

#### Monopolar cutting

Pure cutting	300W at 300 Ohm
TUR cutting	300W at 300 Ohm
Blend1	180W at 300 Ohm
Blend2	210W at 300 Ohm

#### Monopolar coagulation

SoftCoag	100W at 300 Ohm
ForcedCoag	120W at 300 Ohm

#### Bipolar coagulation

Bicoag1	90W at 200 Ohm
Bicoag2	90W at 200 Ohm
Generator operation frequency	440 kHz
Display / Controls	7" TFT / touch screen
Protection class	I
Applied part	BF
Classification acc. to MDD 93/42 ECC	IIb
Low-frequency leakage currents	acc. to IEC 60601-1
High-frequency leakage currents	acc. to IEC 60601-2-2
Mains voltage, V	230
Power consumption, W, max.	650
Dimensions, mm	320x140x350
Weight, kg	7,3

**EMBITRON s.r.o.**

Office Prague:  
Evropská 2758/11  
160 00 Praha 6 - Dejvice  
Czech Republic  
+420 224 904 803

Headquarter:  
290, 330 23 Vochoz  
Czech Republic  
+420 371 511 600

[poptavky@embitron.cz](mailto:poptavky@embitron.cz)  
[www.embitron.cz](http://www.embitron.cz)

